

ORIGINAL

1 **LEWIS BRISBOIS BISGAARD & SMITH LLP**
 2 JON E. HOKANSON, SB# 118829
 3 hokanson@lbbslaw.com
 4 DANIEL C. DECARLO, SB# 160307
 5 decarlo@lbbslaw.com
 6 JOSEPHINE A. BROSAS, SB# 239342
 7 brosas@lbbslaw.com
 8 221 North Figueroa Street, Suite 1200
 9 Los Angeles, California 90012
 10 Telephone: 213.250.1800
 11 Facsimile: 213.250.7900

12 Attorneys for Plaintiff SASCO

2013 APR 22 PM 1:09
 CLERK U.S. DISTRICT COURT
 CENTRAL DIST. OF CALIF.
 SANTA ANA
 BY *h*

FILED

13 UNITED STATES DISTRICT COURT

14 CENTRAL DISTRICT OF CALIFORNIA, SOUTHERN DIVISION

15 SASCO, a California corporation,

16 Plaintiff,

17 vs.

18 WEBER ELECTRIC
 19 MANUFACTURING COMPANY, a
 20 Michigan corporation,

21 Defendant.

CASE NO. SACV 13-00022 CJC (JPRx)

The Hon. Cormac J. Carney

**FIRST AMENDED COMPLAINT
 FOR PATENT INFRINGEMENT;
 FRCP Rule 15(a)(1)(B)**

DEMAND FOR JURY TRIAL

Trial Date: None Set

22 Plaintiff SASCO ("SASCO"), hereby files without leave pursuant to FRCP
 23 Rule 15(a)(1)(B) its First Amended Complaint against Defendant WEBER
 24 ELECTRIC MANUFACTURING COMPANY ("WEMCO"), alleges as follows:

25 **JURISDICTION AND VENUE**

26 1. This action arises under the patent laws of the United States, 35 U.S.C.
 27 §§ 271 *et seq.* This Court has subject matter jurisdiction pursuant to 28 U.S.C. §§
 28 1331 and 1338(a).

2. Venue is proper in this judicial district pursuant to 28 U.S.C. §§
 1391(b), (c) and 1400(b). On information and belief, WEMCO has purposely

4826-5388-0851.1

FIRST AMENDED COMPLAINT FOR PATENT INFRINGEMENT; DEMAND FOR JURY TRIAL

1 transacted business involving its accused products in this judicial district, has
2 committed acts of infringement in this judicial district, and continues to commit acts
3 of infringement in this district.

4 **THE PARTIES**

5 3. SASCO is a corporation organized and existing under the laws of the
6 State of California, having its principal place of business at 2750 Moore Avenue,
7 Fullerton, California 92833. SASCO provides electrical contracting services and
8 has its primary operations in California.

9 4. On information and belief, WEMCO is a corporation organized and
10 existing under the laws of the State of Michigan, having its principal place of
11 business at 2465 23 Mile Road, Shelby Township, Michigan 48316. On information
12 and belief, WEMCO is engaged in the business of providing companies,
13 distributors, wholesalers and contractors with electrical and wire handling
14 equipment.

15 5. On information and belief, WEMCO has committed acts of
16 infringement alleged herein within this judicial district.

17 **SASCO'S PATENT-IN-SUIT**

18 6. SASCO is the owner of the entire right, title and interest in United
19 States Patent No. 6,435,450 ("the '450 patent"), entitled "Multi-Compartment
20 Paralleling Reel Having Independent Compartments" which was duly and legally
21 issued by the United States Patent and Trademark Office on August 20, 2002. A
22 true and correct copy of the '450 patent is attached as Exhibit A to this First
23 Amended Complaint and is incorporated herein by reference.

24 7. SASCO has the right to exclude others from making, using, offering for
25 sale, or selling in the United States and importing into the United States
26 embodiments of the inventions claimed in the '450 patent. SASCO also has the
27 right to sue and recover damages for any and all infringements thereof.

28 8. SASCO has owned the '450 patent throughout the period of WEMCO's

1 infringing acts and still owns the patent.

2 9. The '450 patent describes a multi-compartment paralleling reel that
3 allows different sets of electrical wire to be drawn from the paralleling reel
4 independently of each other and to permit loading of the reel with electrical wire by
5 rotating the compartments of the reel in unison. The '450 patent claims, *inter alia*, a
6 multi-compartment paralleling reel that includes a reel securing bar insertable
7 transversely through aligned holes of each of the independent compartments to
8 secure the independent compartments to one another. The '450 patent also claims,
9 *inter alia*, a method for allowing a plurality of different sets of wire to be drawn
10 from a paralleling reel independently of each other.

11 **CLAIM FOR RELIEF**

12 **(Infringement of the '450 Patent – 35 U.S.C. § 271(a))**

13 10. SASCO incorporates by reference the allegations of the preceding
14 paragraphs, as if fully repeated herein.

15 11. WEMCO, without authority or license from SASCO, has unlawfully
16 and wrongfully made, used, sold, offered for sale, distributed in the United States,
17 and/or imported into the United States, and is now making, using, selling, offering
18 for sale, distributing in the United States, and/or importing into the United States
19 multi-compartment reels that are covered by one or more claims of the '450 patent,
20 including but not limited to the MCR-PTS-2 and MCR-PTS-3 payout/transport
21 stands ("the Accused Products"). On information and belief, WEMCO has used and
22 is using the methods of one or more claims of the '450 patent to draw wire from
23 and/or load wire onto the Accused Products. A true and correct copy of a print out
24 from WEMCO's online catalog at www.wemco-usa.com/catalog depicting the
25 MCR-PTS-2 payout/transport stand is attached hereto as Exhibit B. A true and
26 correct copy of a print out from WEMCO's online catalog at [www.wemco-](http://www.wemco-usa.com/catalog)
27 [usa.com/catalog](http://www.wemco-usa.com/catalog) depicting the MCR-PTS-3 payout/transport stand is attached hereto
28 as Exhibit C.

1 12. WEMCO's unauthorized and wrongful making, using, selling, offering
2 for sale, distributing, and/or importing the Accused Products within the United
3 States and within this judicial district, constitutes infringement of at least one claim
4 of the '450 patent, under 35 U.S.C. §§ 271 *et seq.*

5 13. SASCO has given WEMCO notice of its infringement of the '450
6 patent.

7 14. SASCO is entitled to damages resulting from WEMCO's infringing
8 activities under 35 U.S.C. §287.

9 15. By reason of WEMCO's infringing activities, SASCO has suffered,
10 and will continue to suffer, substantial damages in an amount to be proven at trial.

11 16. WEMCO's continuing acts of infringement are irreparably harming and
12 causing damage to SASCO, for which SASCO has no adequate remedy at law, and
13 will continue to suffer such irreparable injury unless WEMCO's continuing acts of
14 infringement are enjoined by the Court.

15 **PRAYER FOR RELIEF**

16 WHEREFORE, SASCO respectfully requests that this Court:

17 A. Enter judgment in favor of SASCO that WEMCO has infringed the
18 '450 patent;

19 B. Declare that WEMCO's acts and conduct infringe the '450 patent and
20 the exclusive rights in said patent held by SASCO;

21 C. Pursuant to 35 U.S.C. §283, enter a permanent injunction which:

22 i. Enjoins WEMCO, its officers, directors, agents, employees,
23 privies, subsidiaries, affiliates, divisions, branches, successors, and assigns, and all
24 others acting in concert or privity therewith, and all those acting for them or in their
25 behalf, from infringing upon the '450 patent; and

26 ii. Enjoins WEMCO, its directors, officers, agents, employees,
27 representatives, and all other persons in active participation with them, to recall
28 from all distributors, and all others known to WEMCO, all products which infringe

1 upon the '450 patent, and requires WEMCO to file with this court and to serve upon
2 SASCO, within thirty (30) days after service of the Court's Order as herein prayed,
3 a report in writing under oath setting forth in detail the manner and form in which
4 WEMCO has complied with the Court's order;

5 D. Pursuant to 35 U.S.C. §284, award SASCO damages adequate to
6 compensate for the infringement, but in no event less than a reasonable royalty,
7 together with interest and costs;

8 E. Grant an accounting of damages resulting from WEMCO's
9 infringement of the '450 patent;

10 F. Award pre-judgment and post-judgment interest pursuant to 35 U.S.C.
11 § 284;

12 G. Grant such other and further relief as the equity of the case may require
13 and as this Court may deem just and proper, together with costs and disbursements
14 of this action.

15 DATED: April 22, 2013

JON E. HOKANSON
DANIEL C. DECARLO
JOSEPHINE A. BROSAS
LEWIS BRISBOIS BISGAARD & SMITH LLP

16
17
18
19
20 By:


Jon E. Hokanson
Attorneys for Plaintiff SASCO

DEMAND FOR JURY TRIAL

SASCO requests a trial by jury on all issues so triable by right pursuant to
Fed. R. Civ. P. 38.

DATED: April 22, 2013

JON E. HOKANSON
DANIEL C. DECARLO
JOSEPHINE A. BROSAS
LEWIS BRISBOIS BISGAARD & SMITH LLP

By:



Jon E. Hokanson
Attorneys for Plaintiff SASCO

EXHIBIT A



US006435450B1

(12) **United States Patent**
Shields et al.

(10) Patent No.: **US 6,435,450 B1**
(45) Date of Patent: **Aug. 20, 2002**

(54) **MULTI-COMPARTMENT PARALLELING REEL HAVING INDEPENDENT COMPARTMENTS**

(75) Inventors: **John Shields, Glendale; Steve Szalay, La Vern; Cliff Thompson, Murrieta, all of CA (US)**

(73) Assignee: **Sasco Electric, Santa Ana, CA (US)**

(*) Notice: Subject to any disclaimer, the term of this patent is extended or adjusted under 35 U.S.C. 154(b) by 1 day.

(21) Appl. No.: **09/726,888**

(22) Filed: **Nov. 30, 2000**

(51) Int. Cl.⁷ **B65H 16/02; B65H 75/44**

(52) U.S. Cl. **242/594.3; 242/118.41; 242/388.6; 242/474.8**

(58) Field of Search **242/388.6, 390.8, 242/594.3, 594.4, 474.8, 476.1, 118.41**

(56) **References Cited**

U.S. PATENT DOCUMENTS

782,709 A * 2/1905 Taubert 242/118.4
1,593,781 A * 7/1926 See 242/594.3 X
3,086,720 A * 4/1963 Leach 242/474.8
3,854,509 A * 12/1974 Bailey 242/594.3
3,907,229 A * 9/1975 Iannucci et al. 242/594.3 X
4,208,021 A * 6/1980 Wall 242/594.3
5,653,293 A * 8/1997 Ellis 242/388.6 X
5,915,947 A * 6/1999 Tomlinson 242/594.3 X

FOREIGN PATENT DOCUMENTS

JP 61-235370 * 10/1986 242/594.3 X

OTHER PUBLICATIONS

Reel-O-Matic; Reel-Neat Systems, Inc. catalog: pp. 50 & 65, dated 1997.

* cited by examiner

Primary Examiner—Michael R. Mansen

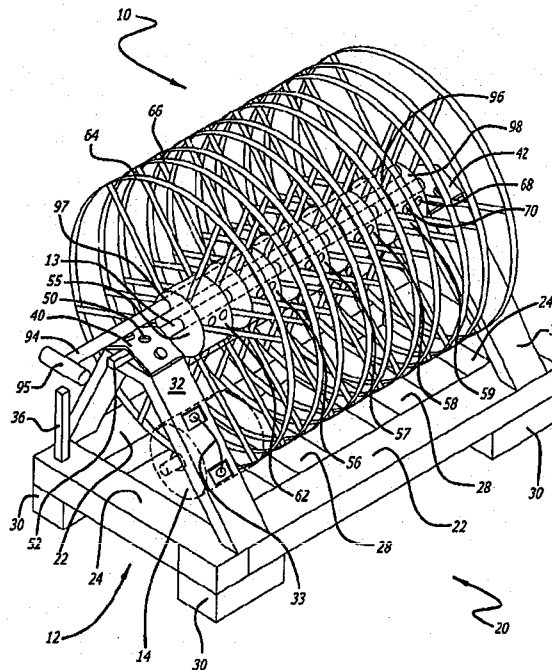
Assistant Examiner—Minh-Chau Pham

(74) Attorney, Agent, or Firm—Blakely Sokoloff Taylor & Zafman

(57) **ABSTRACT**

A multi-compartment paralleling reel that allows different sets of wire to be drawn from the paralleling reel independently of each other. The multi-compartment paralleling reel includes a plurality of independent compartments. Each independent compartment can store a set of wire. A shaft mounted through the plurality of independent compartments allows each independent compartment to rotate relative to the shaft and allows each independent compartment to rotate independently of the other independent compartments. Thus, each set of wire can be drawn from each independent compartment of the multi-compartment paralleling reel independently of the other independent compartments. This allows the different sets of wire, which may include wires that have different diameter sizes, to be drawn from the independent compartments at different rates of speed or the same speed, depending upon what is desired.

15 Claims, 4 Drawing Sheets



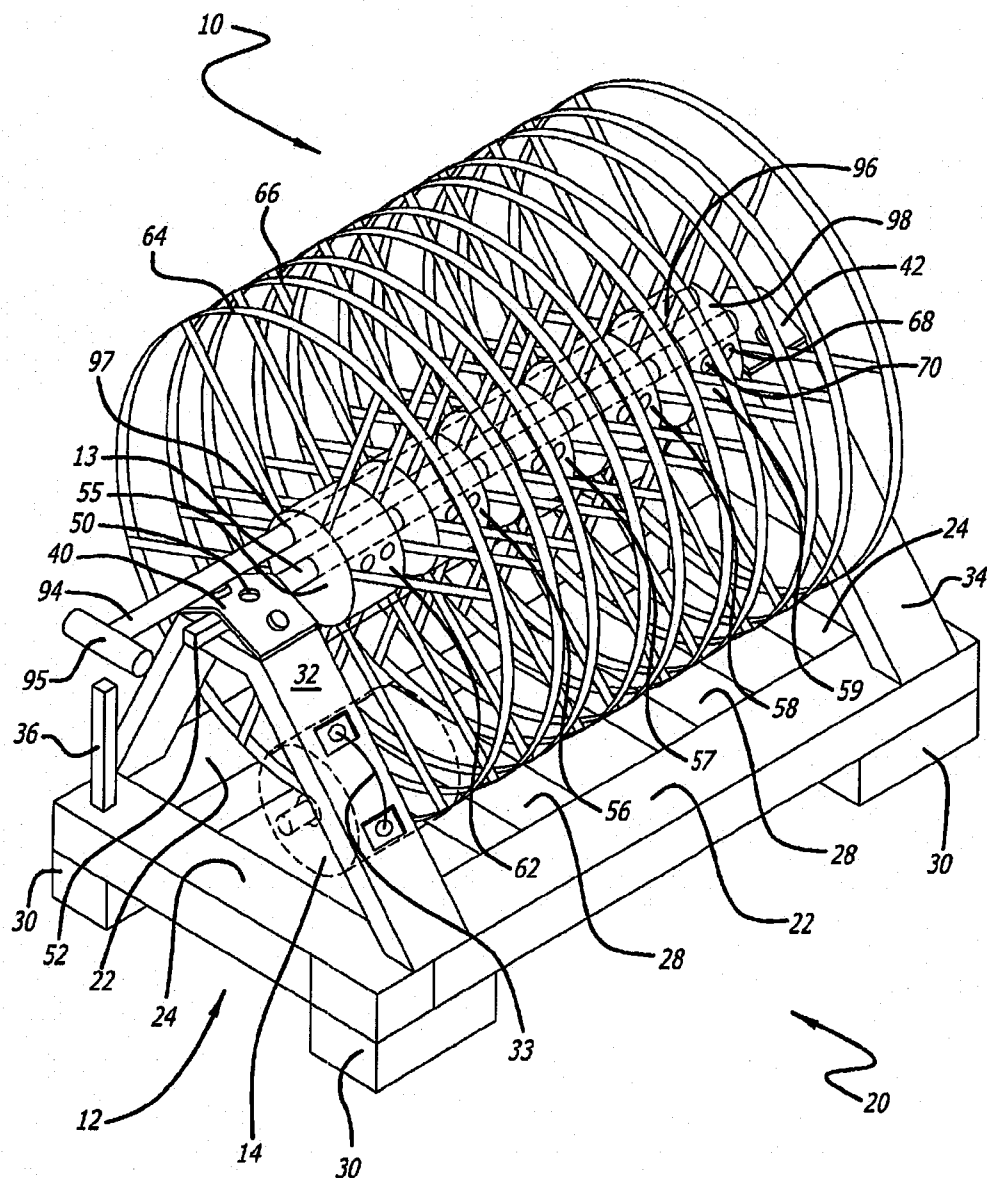
U.S. Patent

Aug. 20, 2002

Sheet 1 of 4

US 6,435,450 B1

FIG. 1



U.S. Patent

Aug. 20, 2002

Sheet 2 of 4

US 6,435,450 B1

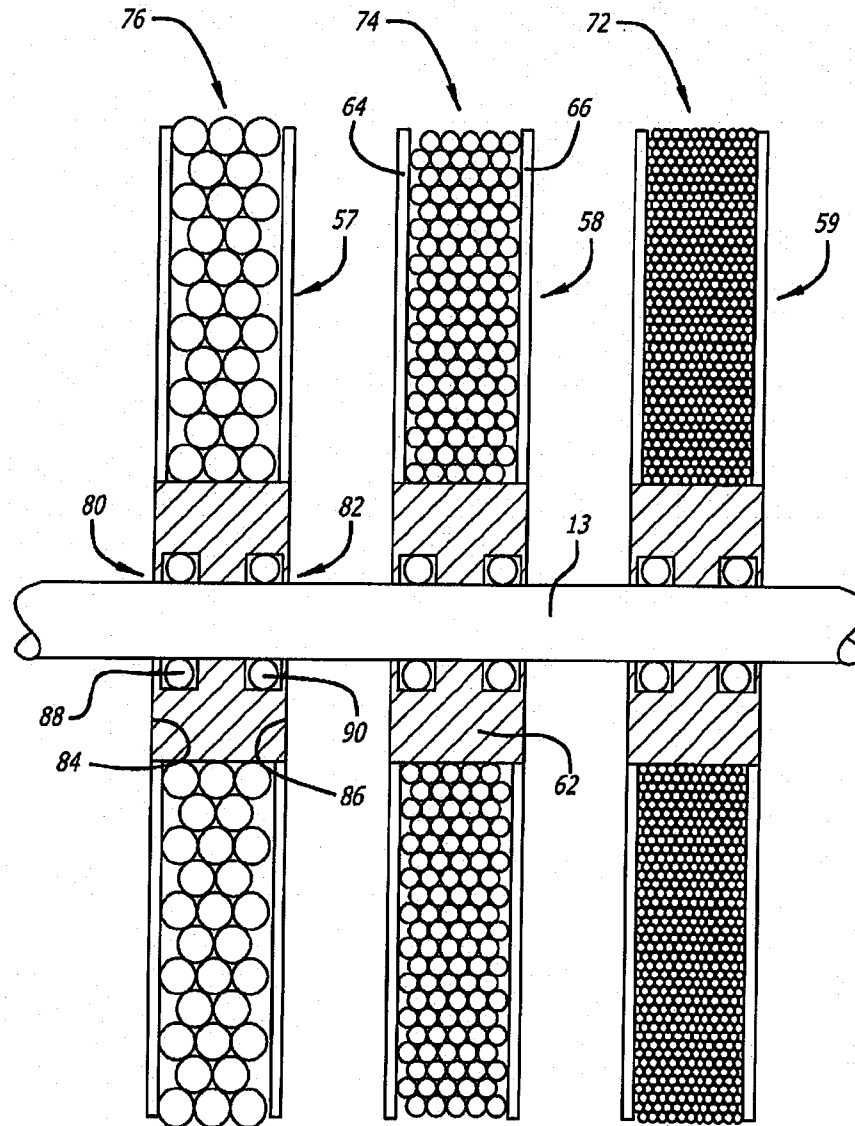


FIG. 2

U.S. Patent

Aug. 20, 2002

Sheet 3 of 4

US 6,435,450 B1

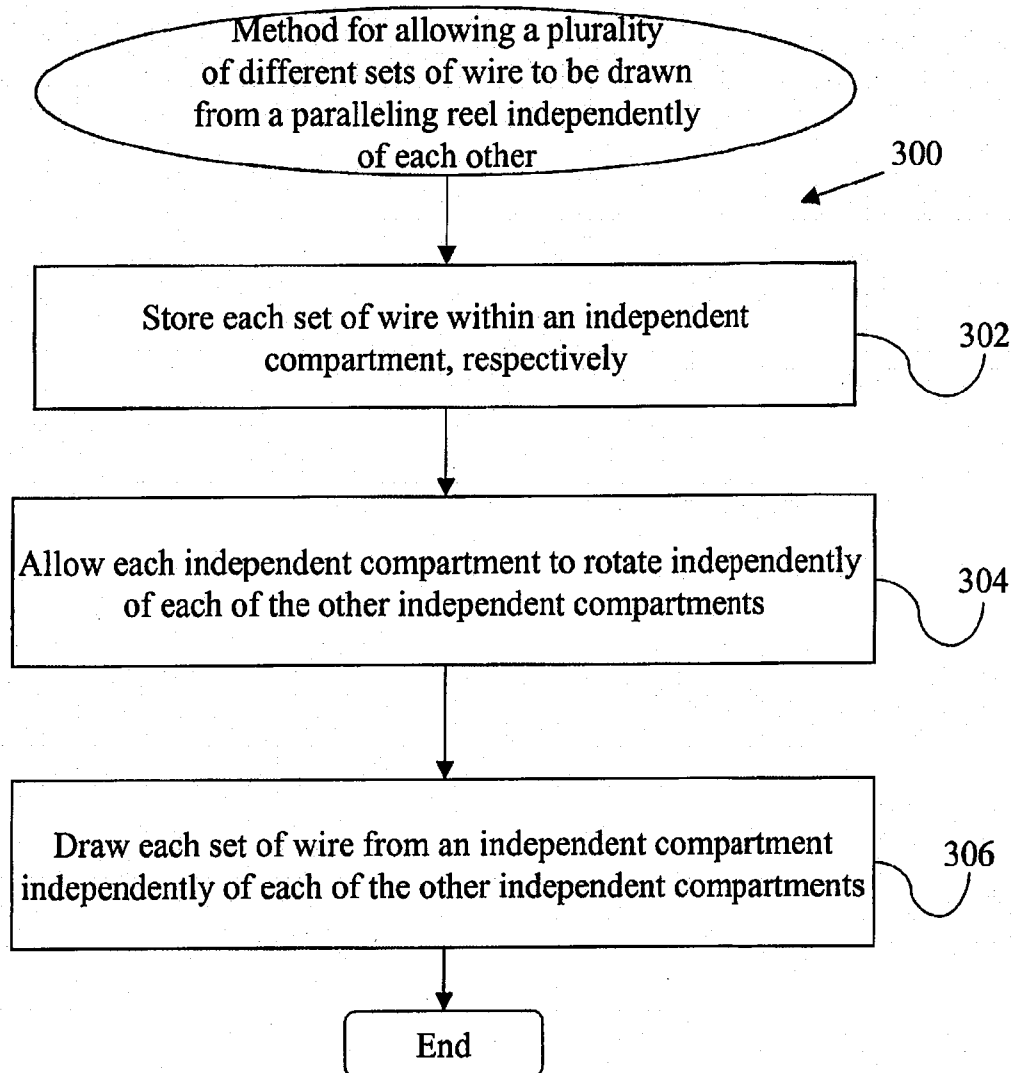


Figure 3

U.S. Patent

Aug. 20, 2002

Sheet 4 of 4

US 6,435,450 B1

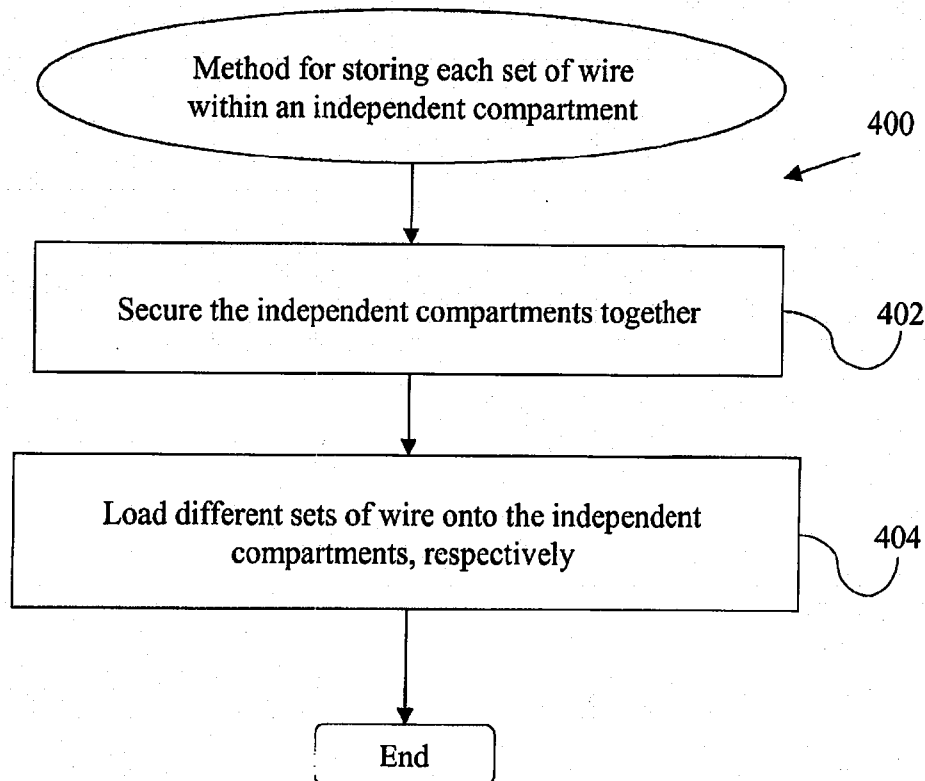


Figure 4

US 6,435,450 B1

1

MULTI-COMPARTMENT PARALLELING REEL HAVING INDEPENDENT COMPARTMENTS

BACKGROUND

1. Field of the Invention

The present invention relates to the mechanical arts. In particular, the invention relates to a multi-compartment paralleling reel for allowing a plurality of different sets of wire to be drawn from the paralleling reel independently of each other.

2. Description of Related Art

Standard paralleling reels are well known in the art. Generally, electrical contractors use standard paralleling reels to install feeder wire, as well as other types of wiring, during the construction or maintenance of structures requiring electricity, such as buildings. For example, feeder wire is used as main electrical wiring to feed the electrical panels of buildings and typically has a large diameter. Standard paralleling reels can be composed of one large compartment having a hub and a pair of opposed rings at the hub's ends, which stores a single set of wire (wrapped around the hub), or multiple compartments formed by a plurality of rings dividing up the hub into multiple compartments each of which stores a different set of wire (wrapped around the hubs, respectively). Often, the standard paralleling reel is rotatably coupled to a platform by being fixedly mounted to a shaft, which is in turn rotatably coupled to the platform. Also, the standard paralleling reel is often motorized to aid in the loading of wire.

In the multiple compartments case, a worker typically draws a wire, by hand, from each of the multiple compartments, to install the wires. The multiple compartments are typically fixed onto the shaft of the standard paralleling reel such that the multiple compartments rotate together in unison. Thus, the multiple compartments all turn at the same time and at the same rate of speed. Accordingly, the different wires are released at whatever rate of speed that the multiple compartments are turning at. Unfortunately, it is often desirable for the workers to be able to pull the various wires from the different multiple compartments independently of one another at different rates of speed.

Additionally, it is often desirable for the workers to be able to pull wires having different diameter sizes from the different multiple compartments at the same rate of speed. However, when the diameter size of wire in one compartment differs from the diameter size of wire in other compartments, the various wires having differing diameter sizes are released at different rates of speed, which results in a significant loss of efficiency for the workers who are trying to pull the wires out in unison.

In view of the above, it should be appreciated that there is a need for a multi-compartment paralleling reel having independent compartments that allows the independent compartments to rotate independently of one another such that workers can draw the different sets of wire from the independent compartments at differing speeds. Particularly there is a need for a multi-compartment paralleling reel to allow workers to simultaneously unload different sets of wire having different diameter sizes at the same rate of speed. The present invention satisfies these and other needs and provides further related advantages.

SUMMARY

The present invention discloses a multi-compartment paralleling reel that allows different sets of wire to be drawn

2

from the paralleling reel independently of each other. The multi-compartment paralleling reel includes a plurality of independent compartments. Each independent compartment can store a set of wire. A shaft mounted through the plurality of independent compartments allows each independent compartment to rotate relative to the shaft and allows each independent compartment to rotate independently of the other independent compartments, respectively. Thus, each set of wire can be drawn from each independent compartment of the multi-compartment paralleling reel independently of the other independent compartments. This allows the different sets of wire to be drawn from the independent compartments at different rates of speed or the same speed, depending upon what is desired. Accordingly, workers can unload different sets of wire having the same diameter size, or different diameter sizes, from the multi-compartment paralleling reel, at a desired speed, independently of one another and the other sets of wire. For example, workers can simultaneously unload different sets of wire having different diameter sizes at the same speed.

In one embodiment, the multi-compartment paralleling reel is rotatably coupled to a platform and is connected to a motor. The multi-compartment paralleling reel may further include a reel securing bar that extends transversely through the independent compartments to secure the independent compartments to one another. In this embodiment, the reel securing bar is used to secure the independent compartments to one another when different sets of wire are loaded onto the independent compartments, respectively. For example, the motor can be used to turn the independent compartments to load the wire. On the other hand, the reel securing bar is removed when the wire is unloaded. This allows the independent compartments to rotate independently of one another about the shaft such that workers can draw the different sets of wire, possibly having different diameter sizes, from the independent compartments at a desired speed. For example, workers can simultaneously unload different sets of wire having different diameter sizes at the same speed. This results in a significant increase in efficiency for workers trying to unload wires having different diameter sizes in unison.

Other features and advantages of the present invention will be set forth in part in the description which follows and the accompanying drawings, wherein the preferred embodiments of the present invention are described and shown, and in part will become apparent to those skilled in art upon examination of the following detailed description taken in conjunction with the accompanying drawings, or may be learned by the practice of the present invention. The advantages of the present invention may be realized and attained by means of the instrumentalities and combinations particularly pointed out in the appended claims.

BRIEF DESCRIPTION OF THE DRAWINGS

The features and advantages of the present invention will become apparent from the following description of the present invention in which:

FIG. 1 is a perspective view of a multi-compartment paralleling reel according to one embodiment of the present invention.

FIG. 2 is a partial sectional view of the multi-compartment paralleling reel illustrating different sized types of wire mounted within three independent compartments, respectively, according to one embodiment of the present invention.

FIG. 3 is a flowchart illustrating a process for allowing a plurality of different sets of wires to be drawn from a

US 6,435,450 B1

3

paralleling reel independently of each other according to one embodiment of the present invention.

FIG. 4 is a flowchart illustrating a process for storing a set of wire within an independent compartment according to one embodiment of the present invention.

DESCRIPTION

In the following description, the various embodiments of the present invention will be described in detail. However, such details are included to facilitate understanding of the invention and to describe exemplary embodiments for implementing the invention. Such details should not be used to limit the invention to the particular embodiments described because other variations and embodiments are possible while staying within the scope of the invention. Furthermore, although numerous details are set forth in order to provide a thorough understanding of the present invention, it will be apparent to one skilled in the art that these specific details are not required in order to practice the present invention. In other instances details such as, well-known mechanical design methods, procedures, mechanical components and structures, are not described in detail, or are shown in block diagram form, in order not to obscure the present invention.

The present invention discloses a multi-compartment paralleling reel that allows different sets of wire to be drawn from the paralleling reel independently of each other. The multi-compartment paralleling reel includes a plurality of independent compartments. Each independent compartment can store a set of wire. A shaft mounted through the plurality of independent compartments allows each independent compartment to rotate relative to the shaft and allows each independent compartment to rotate independently of the other independent compartments, respectively. Thus, each set of wire can be drawn from each independent compartment of the multi-compartment paralleling reel independently of the other independent compartments. This allows the different sets of wire to be drawn from the independent compartments at different rates of speed or the same speed, depending upon what is desired. Accordingly, workers can unload different sets of wire having the same diameter size, or different diameter sizes, from the multi-compartment paralleling reel, at a desired speed, independently of one another and the other sets of wire. For example, workers can simultaneously unload different sets of wire having different diameter sizes at the same speed.

FIG. 1 is a perspective view of a multi-compartment paralleling reel according to one embodiment of the present invention. As shown in FIG. 1, a multi-compartment paralleling reel 10 is rotatably coupled to a platform 12 by a shaft 13 and can be connected to a motor 14. As will be discussed, the multi-compartment paralleling reel 10 allows different sets of wire, which may include wires having different diameter sizes, to be drawn from independent compartments that rotate independently of one another about the shaft 13, at different rates of speed or the same speed, depending upon what workers operating the multi-compartment paralleling reel desire.

The platform 12 includes a rectangularly shaped base 20 having a first pair of opposed members 22 and a second pair of opposed members 24. Further, the rectangularly shaped base 20 includes a pair of cross-supports 28 mounted between the second pair of opposed members 24. Four base supports 30 (only three shown) depend perpendicularly from the rectangularly shaped base 20 and are used to support the platform against the ground. A pair of triangular supports 32

4

and 34 extend perpendicularly from the rectangularly shaped base 20. The triangular support 32 includes motor supports 33 to mount the motor 14 to the platform 12. The motor 14 may be a portable drive unit such as those produced by WAMCO Inc. Also, extending perpendicularly from the rectangularly shaped base 20 is a reel securing bar storage 36 that can be used for storing a reel securing bar, which will be discussed later.

At the top end of each triangular support 32 and 34, u-shaped pillow bearing shafts 40 and 42, respectively, rotatably mount the shaft 13 to the platform 12. The u-shaped pillow bearing shafts 40 and 42 may be connected to the triangular support by conventional means nut and bolt assembly, rivets, welding, etc. Each u-shaped pillow bearing shaft includes a type-2 pillow bearing (not shown), respectively, to rotatably couple the shaft 13 to the platform 12. Additionally each bracket includes a bearing oiler hole 50 (only one shown) to allow oil to be applied to the type-2 pillow bearing to ensure smooth rotation of the shaft 13 and the multi-compartment paralleling reel 10. The shaft 13 also includes a square motor shank 52 that is connected to the motor 14. The motor 14 can rotate the shaft 13 and the multi-compartment paralleling reel 10 such that wire can be loaded onto the multi-compartment paralleling reel 10.

The multi-compartment paralleling reel 10 includes a plurality of independent compartments 55, 56, 57, 58, and 59 and the shaft 13 to allow different sets of wire to be drawn from the multi-compartment paralleling reel independently of each other. Particularly, in this embodiment five independent compartments 55, 56, 57, 58, and 59 are shown. However, it should be appreciated that the multi-compartment paralleling reel 10 of the invention may have any number of independent compartments and this embodiment is only exemplary.

Each independent compartment includes a cylindrically shaped hub 62 and a pair of opposed rings 64 and 66, respectively. Each independent compartment can store a set of wire. The set of wire is stored by being wrapped around the hub 62 between the opposed rings 64 and 66. Each hub has two arbor holes 68 and 70 on each side (only two shown). A wire of a set of a wire can be looped through the arbor holes to fix the wire onto a hub. After fixing wires to hubs, the sets of wires can be loaded onto the hubs of the independent compartments, respectively, by the motor 14 turning the independent compartments of the multi-compartment paralleling reel 10, in unison, to wrap the sets of wires around the hubs, respectively.

FIG. 2 is a partial sectional view of the multi-compartment paralleling reel illustrating different sized types of wire mounted within three independent compartments, respectively, according to one embodiment of the present invention. As shown particularly in FIG. 2, each hub 62 of each independent compartment can store a set of wire. For example, independent compartment 59 can store a smaller sized diameter wire 72, independent compartment 58 can store a medium sized diameter wire 74, and independent compartment 57 can store a larger sized diameter wire 76.

The shaft 13 mounted through the plurality of independent compartments 55, 56, 57, 58, and 59, respectively, allows each independent compartment to rotate relative to the shaft and allows each independent compartment to rotate independently of the other independent compartments, respectively. The shaft 13 extends transversely through aligned holes 80 and 82 contained within first and second sides 84 and 86 of each hub 62, respectively. Moreover, the

US 6,435,450 B1

5

shaft 13 extends through bearings 88 and 90 contained within each hub 62, near the first and second sides 84 and 86, respectively. The bearings 88 and 90 of each hub 62 allow each independent compartment to rotate freely relative to the shaft 13. Alternatively, bushings can be used in lieu of bearings. Also, as previously discussed, the shaft 13 rotatably mounts the independent compartments of the multi-compartment paralleling reel 10 to the platform 12.

With the configuration of the multi-compartment paralleling reel 10 of the present invention, each set of wire can be drawn from each independent compartment 55 . . . 59 of the multi-compartment paralleling reel independently of the other independent compartments. Typically, during unloading, a worker draws or pulls the wire from the independent compartments for installation into a structure that needs electrical wiring, such as a building. The independent rotation of the different independent compartments allows different sets of wire to be drawn from the independent compartments at different rates of speed or the same speed, depending upon the desires of the workers pulling the wires from the independent compartments. Accordingly, workers can unload different sets of wire having the same diameter size, or different diameter sizes (e.g. wire sets 72, 74, 76), from the multi-compartment paralleling reel, at a desired speed, independently of one another and the other sets of wire. For example, workers can simultaneously unload different sets of wire having different diameter sizes (e.g. wire sets 72, 74, 76) at the same speed. This results in a significant increase in efficiency for workers trying to unload wires having different diameter sizes in unison as opposed to previous types of standard paralleling reels.

Referring to FIG. 1, the multi-compartment paralleling reel 10 further includes a reel securing bar 94 having a rectangular head 95 and a hollow shaft 96 that can be placed transversely through the independent compartments 55 . . . 59 to secure the independent compartments to one another. Particularly, the reel securing bar 94 can be placed through aligned holes 97 and 98 contained within the first and second sides of each hub 62 of each independent compartment, respectively.

The reel securing bar 94 is used to secure the independent compartments 55 . . . 59 to one another when different sets of wire are loaded onto the independent compartments, respectively. A wire of a set of wire can be looped through the arbor holes 68 and 70 of a hub 62 to fix the wire onto the hub. After fixing wires to hubs, the sets of wire can then be loaded onto the hubs of the independent compartment, respectively, by the motor 14 turning the independent compartments of the multi-compartment paralleling reel 10 together, in unison, the independent compartments being secured together by the reel securing bar 94, to wrap the sets of wire around the hubs, respectively. On the other hand, the reel securing bar 94 is removed when wire is unloaded. The far end of the reel securing bar 94, which has a hollow shaft 96, can be placed over the reel securing bar storage 36 to store the reel securing bar.

When the reel securing bar 94 is removed, this allows the independent compartments 55 . . . 59 to rotate independently of one another, about the shaft 13, such that workers can draw the different sets of wire, possibly having different diameter sizes (e.g. wire sets 72, 74, 76), from the independent compartments at any desired speed (e.g. different speeds or the same speed). The weight and friction of the shaft keeps the shaft in a basically fixed position relative to the independent compartments such that the independent compartments can rotate freely about the shaft. For example, workers can simultaneously unload different sets of wire

6

having different diameter sizes (e.g. wire sets 72, 74, 76) at the same speed, which results in a significant increase in efficiency for workers trying to unload wires having different diameter sizes in unison.

The method of use and operation of the multi-compartment paralleling reel 10, constructed as described, generally proceeds as follows. FIG. 3 is a flowchart illustrating a process 300 for allowing a plurality of different sets of wire to be drawn from a paralleling reel independently of each other according to one embodiment of the present invention. First, each set of wire is stored within an independent compartment, respectively (block 302). To accomplish this, turning to FIG. 4, which is a flowchart illustrating a process 400 for storing each set of wire within an independent compartment according to one embodiment of the present invention, the independent compartments are initially secured together (block 402). Next, the different sets of wire are loaded onto each independent compartment, respectively (block 404).

Particularly, as shown in FIG. 1, the reel securing bar 94 is placed through the holes 97 and 98 of the independent compartments 55 . . . 59 to secure the independent compartments to one another. A wire of a set of wire can be looped through the arbor holes 68 and 70 of a hub 62 to fix the wire onto the hub of the independent compartment. After fixing wires to hubs, the sets of wire can then be loaded onto the hubs of the independent compartments, respectively, by the motor 14 turning the independent compartments of the multi-compartment paralleling reel 10 together, in unison, to wrap the sets of wire around the hubs, respectively.

Continuing with reference to FIG. 3, to unload the wire, each independent compartment is allowed to rotate independently of each of the other independent compartments (block 304) and each set of wire is drawn from an independent compartment independently of each of the other independent compartments (block 306). Particularly, with reference also to FIGS. 1 and 2, the reel securing bar 94 can be removed from the independent compartments 55 . . . 59 allowing the independent compartments to rotate independently of one another, about the shaft 13, such that workers can draw the different sets of wire, possibly having different diameter sizes (e.g. wire sets 72, 74, 76), from the independent compartments at any desired speed. Accordingly, workers can unload different sets of wire having the same diameter size, or different diameter sizes, from the multi-compartment paralleling reel, at a desired speed (e.g. different rates of speed or the same rate of speed), independently of one another and the other sets of wire. For example, workers can simultaneously unload different sets of wire having different diameter sizes (e.g. wire sets 72, 74, 76) at the same speed, which results in a significant increase in efficiency for workers trying to unload wires having different diameter sizes in unison.

While this invention has been described with reference to illustrative embodiments, this description is not intended to be construed in a limiting sense. Various modifications of the illustrative embodiments, as well as other embodiments of the invention, which are apparent to persons skilled in the art to which the invention pertains are deemed to lie within the spirit and scope of the invention.

What is claimed is:

1. A multi-compartment paralleling reel for allowing a plurality of different sets of wire to be drawn from the multi-compartment paralleling reel independently of each other, comprising:

a plurality of independent compartments, each independent compartment to store one set of wire of the plurality of different sets of wire;

US 6,435,450 B1

7

a shaft mounted through the plurality of independent compartments to allow each independent compartment to rotate relative to the shaft and to allow each independent compartment to rotate independently of each of the other independent compartments;

a reel securing bar insertable transversely through aligned holes of each of the independent compartments to secure the independent compartments to one another; and

wherein each set of wire of the plurality of different sets of wire is drawable from each independent compartment independently of each of the other independent compartments.

2. The multi-compartment paralleling reel of claim 1, wherein one set of wire stored by one of the independent compartments is drawable from the one independent compartment at a different rate of speed than the other different sets of wire stored by the other plurality of independent compartments.

3. The multi-compartment paralleling reel of claim 1, wherein the different sets of wire each stored by one of the independent compartments, including at least one of the different sets of wire having a different wire diameter size than the other different sets of wire, are drawable from the independent compartments at the same rate of speed.

4. The multi-compartment paralleling reel of claim 1, wherein the reel securing bar is used to secure the independent compartments to one another when different sets of wire are loaded onto the independent compartments.

5. The multi-compartment paralleling reel of claim 1, wherein, when the reel securing bar is decoupled from the independent compartments, the independent compartments rotate independently of one another such that each set of wire of the plurality of different sets of wire is drawable from each independent compartment independently of each of the other independent compartments.

6. The multi-compartment paralleling reel of claim 1, wherein the multi-compartment paralleling reel includes five independent compartments.

7. The multi-compartment paralleling reel of claim 1, wherein each independent compartment includes a cylindrically shaped hub and a pair of opposed rings.

8. A method for allowing a plurality of different sets of wire to be drawn from a paralleling reel independently of each other, comprising:

storing each set of wire of the plurality of different sets of wire utilizing an independent compartment of a plurality of independent compartments;

8

allowing each independent compartment to rotate independently of each of the other independent compartments;

securing the independent compartments to one another utilizing a reel securing bar that extends transversely through aligned holes of each independent compartment to secure the independent compartments to one another; and

wherein each set of wire of the plurality of different sets of wire is drawable from each independent compartment independently of each of the other independent compartments when the independent compartments are not secured to one another.

9. The method of claim 8, wherein one set of wire stored by one of the independent compartments is drawable from the one independent compartment at a different rate of speed than the other different sets of wire stored by the other plurality of independent compartments.

10. The method of claim 8, wherein the different sets of wire each stored by one of the independent compartments, including at least one of the different sets of wire having a different wire diameter size than the other different sets of wire, are drawable from the independent compartments at the same rate of speed.

11. The method of claim 8 wherein allowing each independent compartment to rotate independently of each of the other independent compartments includes utilizing a shaft mounted through the plurality of independent compartments.

12. The method of claim 8, further comprising loading different sets of wire onto the independent compartments after securing the independent compartments to one another.

13. The method of claim 8, further comprising:

releasing the independent compartments from one another by decoupling the reel securing bar; and

unloading different sets of wire from the independent compartments, wherein the independent compartments rotate independently of one another such that each set of wire of the plurality of different sets of wire is drawable from each independent compartment independently of each of the other independent compartments.

14. The method of claim 8, wherein the plurality of independent compartments include five independent compartments.

15. The method of claim 8, wherein each independent compartment includes a cylindrically shaped hub and a pair of opposed rings.

* * * * *

EXHIBIT B

E-MAIL WEMCO

← PAGE →

PRINT



**Multiple
Compartment
Reels:**

[Product
Ordering
Information](#)

[Options and
Accessories](#)

[Replacement
Parts](#)

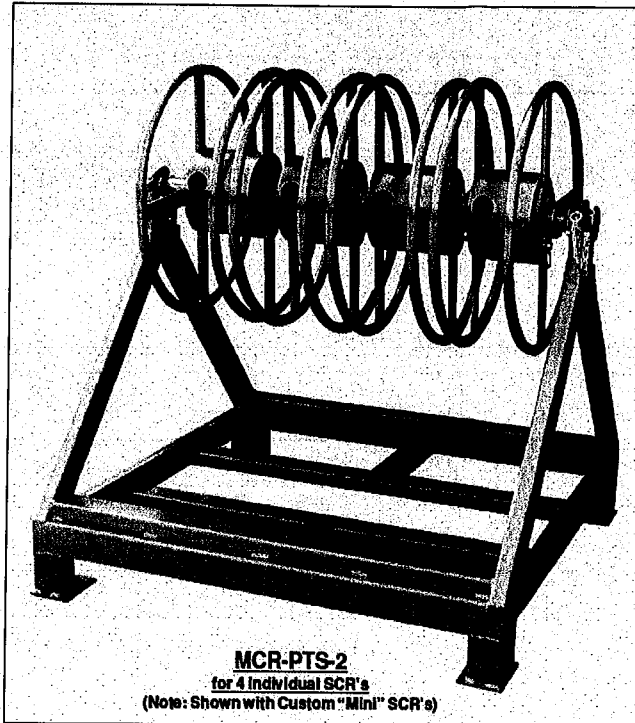
[Replacement
Parts
Diagrams](#)

[Photo Gallery](#)

[Wemco Wire
Handling Tips](#)

[Instructions &
Maintenance](#)

MCR-PTS-2 Payout/Transport Stand



MCR-PTS-2
for 4 individual SCR's
(Note: Shown with Custom "Mini" SCR's)

MCR-PTS-2 Payout/Transport Stand

- ✓ All steel construction
 - ✓ Fits 3, 4 and 5 compartment MCR's
 - ✓ Other models are available
 - ✓ Replaceable shaft bearing pads
 - ✓ 2" dia. solid steel axle
 - ✓ Safely transports to and from job site
 - ✓ Heavy-Duty shaft safety locks
 - ✓ Eliminates damage to MCR
- Optional - Heavy-Duty set screw drive tool



WEBER ELECTRIC MANUFACTURING CO.

2465 23 Mile Road
Shelby Township, MI 48316
www.wemco-usa.com

Phone: 586.323.9000
800.289.3626
Fax: 586.323.9563
586.323.6470

Wire Handling • Storage Systems • Electrical Equipment
THE GLOBAL LEADER IN WIRE HANDLING TECHNOLOGY

EXHIBIT C

E-MAIL WEMCO

PAGE

PRINT



**Multiple
Compartment
Reels:**

[Product
Ordering
Information](#)

[Options and
Accessories](#)

[Replacement
Parts](#)

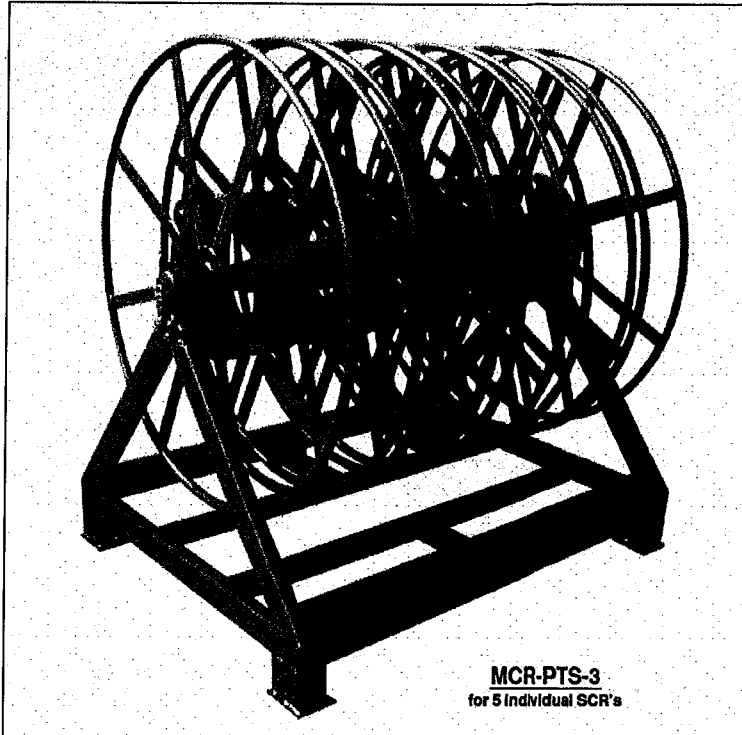
[Replacement
Parts
Diagrams](#)

[Photo Gallery](#)

[Wemco Wire
Handling Tips](#)

[Instructions &
Maintenance](#)

MCR-PTS-3 Payout/Transport Stand



MCR-PTS-3
for 5 Individual SCR's

MCR-PTS-3 Payout/Transport Stand

- ✓ All steel construction
 - ✓ Fits 3, 4 and 5 compartment MCR's
 - ✓ Other models are available
 - ✓ Replaceable shaft bearing pads
 - ✓ 2" dia. solid steel axle
 - ✓ Safely transports to and from job site
 - ✓ Heavy-Duty shaft safety locks
 - ✓ Eliminates damage to MCR
- Optional - Heavy-Duty set screw drive tool



WEBER ELECTRIC MANUFACTURING CO.

2465 23 Mile Road
Shelby Township, MI 48316
www.wemco-usa.com

Phone: 586.323.9000
800.289.3626
Fax: 586.323.9563
586.323.6470

Wire Handling • Storage Systems • Electrical Equipment
THE GLOBAL LEADER IN WIRE HANDLING TECHNOLOGY

FEDERAL COURT CERTIFICATE OF SERVICE

SASCO v WEBER ELECTRIC MANUFACTURING COMPANY, et al.
SACV13-00022 CJC (JPRx) - File No. 31065.14

STATE OF CALIFORNIA, COUNTY OF LOS ANGELES

At the time of service, I was over 18 years of age and not a party to the action. My business address is 221 North Figueroa Street, Suite 1200, Los Angeles, CA 90012. I am employed in the office of a member of the bar of this Court at whose direction the service was made.

On April 22, 2013, I served the following document(s): **FIRST AMENDED COMPLAINT FOR PATENT INFRINGEMENT; FRCP RULE 15(A)(1)(B) - DEMAND FOR FOR JURY TRIAL**, on the following persons at the following addresses (including fax numbers and e-mail addresses, if applicable):

William E. Thomson
Roland J. Tong
BROOKS KUSHMAN P.C.
601 South Figueroa Street, Suite 2080
Los Angeles, California 90017
T: (213) 622-3003
F: (213) 622-3053
wthomson@brookskushman.com
rtong@brookskushman.com
Attorneys for Plaintiff SASCO

The documents were served by the following means:

☒ (BY OVERNIGHT DELIVERY) Based on an agreement of the parties to accept service by overnight delivery, I enclosed the documents in an envelope or package provided by an overnight delivery carrier and addressed to the persons at the addresses listed above. I placed the envelope or package for collection and delivery at an office or a regularly utilized drop box of the overnight delivery carrier.

I declare under penalty of perjury under the laws of the State of California that the foregoing is true and correct.

Executed on April 22, 2013, at Los Angeles, California.



Cora Ruvalcaba